



at the City's heart

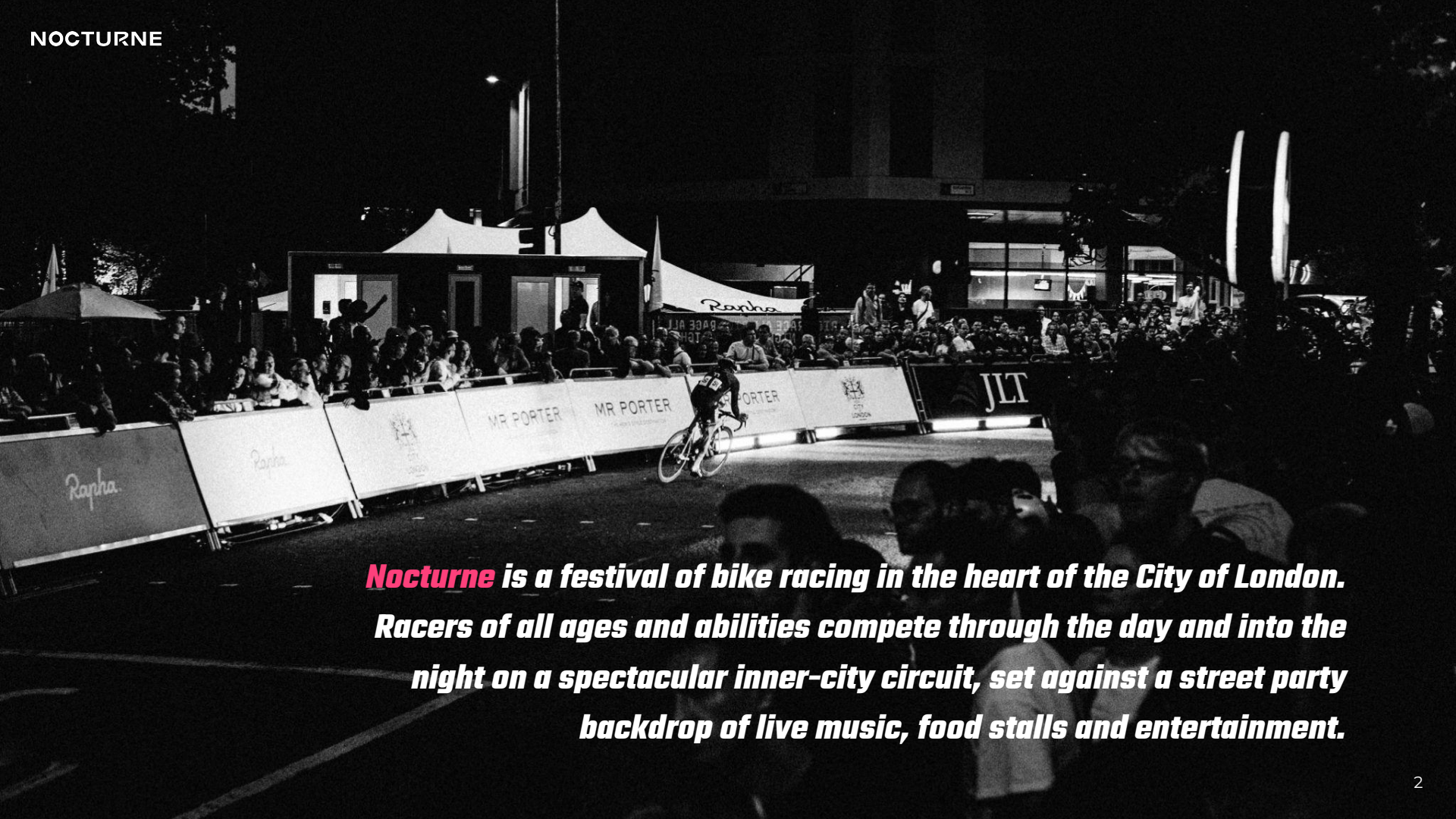
CHEAPSIDE



NOCTURNE

A FESTIVAL OF BIKE RACING
IN THE HEART OF THE CITY
12-13 JUNE 2026

Asset Management



Nocturne is a festival of bike racing in the heart of the City of London. Racers of all ages and abilities compete through the day and into the night on a spectacular inner-city circuit, set against a street party backdrop of live music, food stalls and entertainment.

Event Format

In partnership with the City of London, we are bringing world-class cycle racing back to the City streets on **12-13 June 2026**. The reimagined Nocturne will span two action-packed days, introducing an exciting new format designed to create a spectacular festival of cycling.

City Criterium Friday

- Corporate Pro-Am Challenge
- Engagement with city firms and workers
- Charity fundraising



GREAT ORMOND STREET
HOSPITAL CHARITY

Nocturne Saturday

- Festival of Cycling
- Family activities and community engagement
- World class elite racing broadcast live

World Class Sporting Event

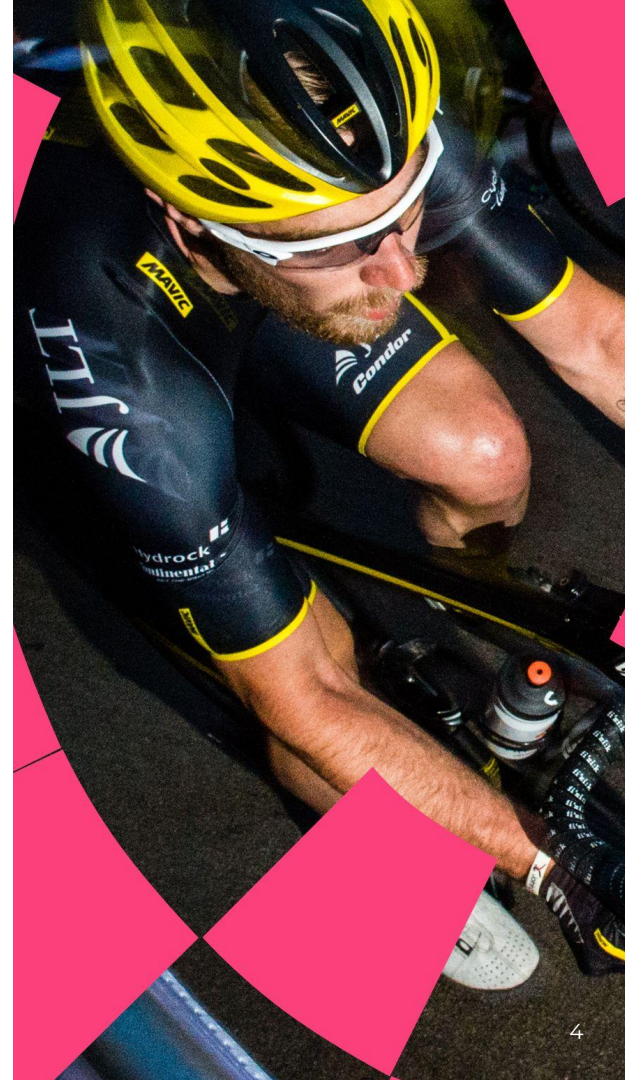
UCI Pro Criterium



Event Schedule

The main race programme will take place on **Saturday 13 June**. The live event will start at 12:00 and finish at 22:00.

12:00	13:30	RIDE THE CIRCUIT and Kids Activities	
13:30	14:20	Mile Run Challenge - Club Runners	1 mile
14:20	15:00	Support Race - Women	30 min + 3 laps
15:10	16:00	Support Race - Men	30 min + 3 laps
16:10	16:40	Limitless Race	25 min + 3 laps
16:40	17:30	INTERVAL - Guinness World Record Attempts	
17:30	18:00	Penny Farthing Race	20 min + 3 laps
18:10	18:40	Voi Bike Challenge	30 min
18:50	19:20	Brompton Folding Bike Race	30 min
19:30	20:00	Mile Run Challenge - Elites	1 mile
20:00	21:00	Elite Criterium - Women	50 min + 3 laps
21:00	22:00	Elite Criterium - Men	50 min + 3 laps



Race Routes

The event will take place on a closed road circuit around Guildhall and Bank. The race circuit will be different on each day (see circuit maps below). The rider village will be located in Guildhall Yard across both days.

GOSH CITY CRITERIUM CIRCUIT - FRIDAY 12 JUNE



MAIN CIRCUIT - SATURDAY 13 JUNE

- Start/finish line on Queen Victoria Street, set against the **iconic backdrop of the Royal Exchange and city skyline**.
- Spectator & activation areas will create a festival atmosphere around Bank Junction with big screens and entertainment.



Target Audience



50,000+

Spectators across
the 2 days



500k+

Viewers: TNT / HBO Max
+ live stream



- Broad appeal to target London experience seekers
- Diverse cosmopolitan audience primarily aged 25-45, with disposable income

LONDON

NOCTURNE

CORPORATE

UK CYCLING FANS

- Fun, amateur and elite races to attract up to **1000 participants**
- **67%** ABC1 demographic
- **46%** more likely to be in senior leadership
- Participation from leading city firms
- Cross sector engagement - Property, Financial services, legal etc
- Internal comms to engage workforce

How to Get Involved

The event is supported by the City of London and Cheapside Business Alliance. Our goal is to create positive economic impact for local businesses from our visitors and spectators.

To maximise the benefits for your business there are a number of ways to get involved:

Activation & Promotions

Our aim is to create a festival atmosphere around the race circuit - make your premises part of the event experience with a pop up or cycling themed activation. Create retail, food or drink promotions on the day and we will promote this to our audience (see below)

Digital Event Guide

We will create a digital event map and will include activations and promotions from local businesses to guide people to your premises around the circuit.

Promotion

We are keen to collaborate with you to promote the event and how your business is involved through social mentions and content before and during the event.

Use the QR code to access our Media Pack for marketing assets including Nocturne logos and photos.

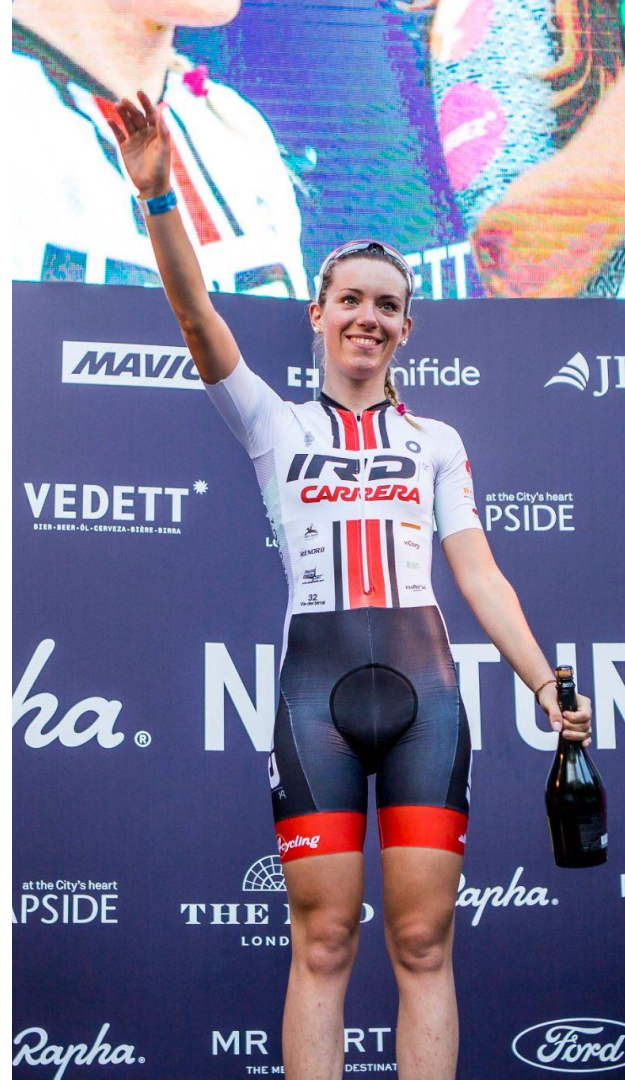
Media Pack



Contact

Get in touch using the email below. If you have any other ideas of how you would like to get involved with the event we are excited to discuss these with you. For information about road closures email: comms@racenocturne.com

info@racenocturne.com





NOCTURNE

Contact

info@racenocturne.com

www.racenocturne.com